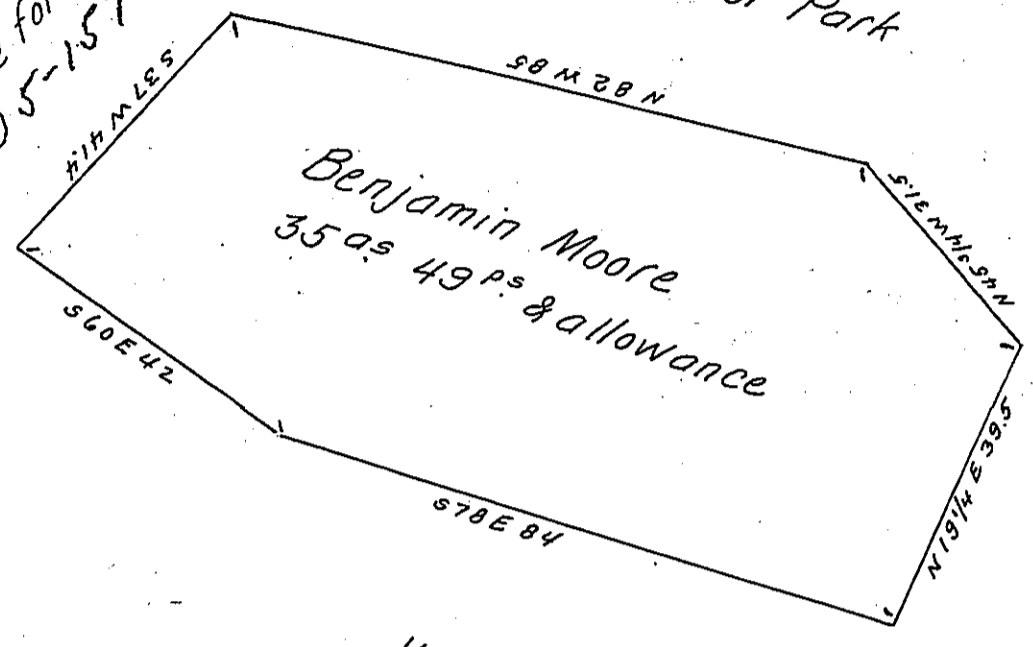


0165-267(2)

Ben. Moore for Slean  
D 5-157

Benjamin Moore for Park



Shupe & Stark

Shupe & Stark

Draft of a tract of land. Containing thirty five acres and forty nine perches, and allowance of six percent for roads &c. Situated in Donegal township, in the County of Westmoreland. Surveyed May 2<sup>nd</sup> A. D. 1870. In pursuance of a warrant granted to Benjamin Moore. Dated December 21<sup>st</sup> A. D. 1869.

W. R. Barnhart C. S.

To Jacob M. Campbell Surveyor General.

IN TESTIMONY that the above is a copy of the original remaining on file in the Department of Internal Affairs of Pennsylvania, made conformably to an Act of Assembly approved the 16th day of February, 1833, I have hereunto set my Hand and caused the Seal of said Department to be affixed at Harrisburg, this sixth day of March 1906.

*Loac D. Brown*  
Secretary of Internal Affairs.